



Simply4emotions by [Erasmus + Project Simply4emotions](#) is licensed under a [Creative Commons Attribution-NonCommercial 4.0 International License](#).

Funded by the European Union. Views and opinions expressed are however those of the author(s) only and do not necessarily reflect those of the European Union or the European Education and Culture Executive Agency (EACEA). Neither the European Union nor EACEA can be held responsible for them. Project Number: 2023-1-DE02-KA220-VET-000157799



Co-funded by
the European Union

To open the "simply 4 emotions cards" platform, click
the following link

<https://challedu.itch.io/simply4emotions-cards>

Click "Run game".

4 **SIMPLY**
emotions



**For the
players**



Click the "Information" button to see information about the simply 4 emotions project, then select your language and character with which to play.



After clicking on a character, the player will see all the available cards associated with that character. By clicking on each card, the player can view the card information. Click on the blue arrow in the upper left corner to go back to the previous screen.



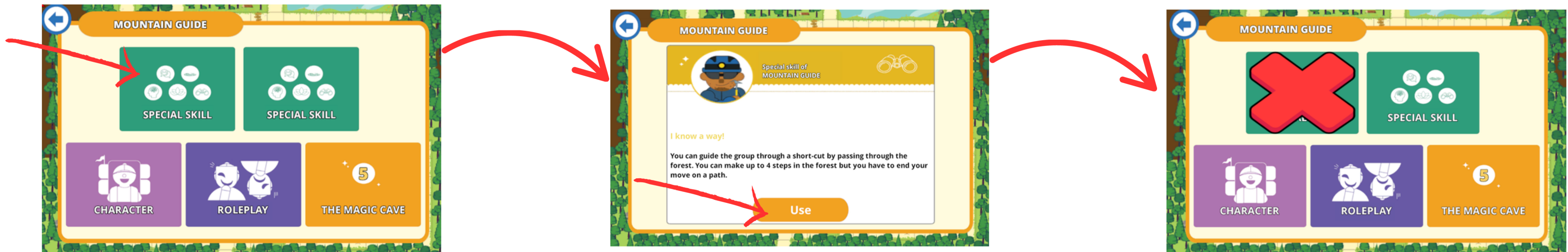
The CHARACTER card includes the character's basic characteristics and it is important for the player to read it at the beginning of the game so that they know what behaviour and attitude to adopt during the game.



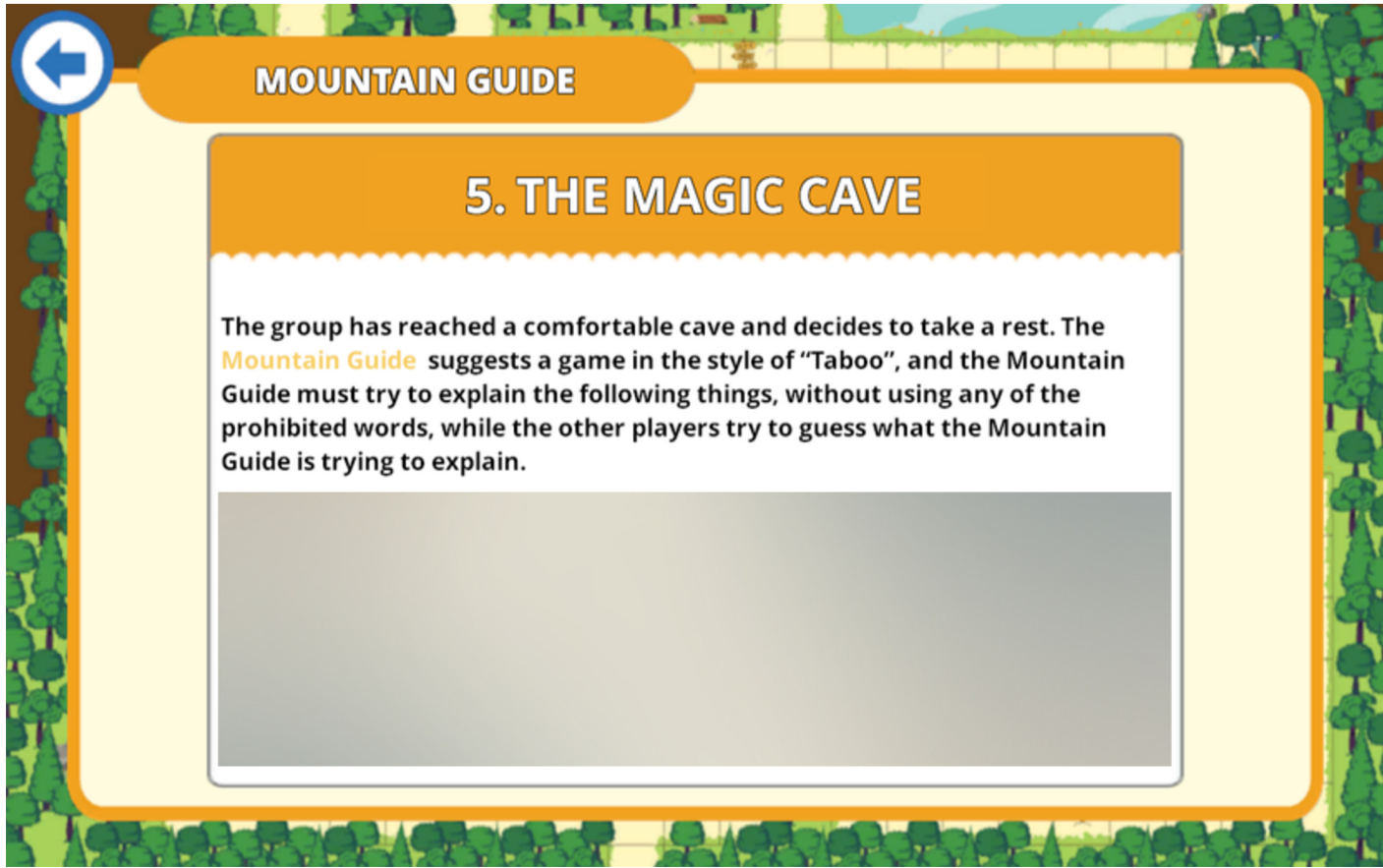
The ROLEPLAY card is used when a landmark card is revealed and leads to a role-playing game. In this case, each player will read their own ROLEPLAY card and follow the instructions.



To use a SPECIAL SKILL card, click "Use". Most SPECIAL SKILL cards can only be used once and once "use" is clicked the card will not be available. Thus, if the player is not ready to use that card, he/she can click on the blue arrow in the upper left corner to return to the previous screen.



Players will also see the back of a LANDMARK card. Each player has a different LANDMARK card and when the players reach a landmark, the coordinator calls out the landmark number and the player who has that landmark card number reads the front side by clicking on the card.





Simply4emotions by [Erasmus + Project Simply4emotions](#) is licensed under a [Creative Commons Attribution-NonCommercial 4.0 International License](#).

Funded by the European Union. Views and opinions expressed are however those of the author(s) only and do not necessarily reflect those of the European Union or the European Education and Culture Executive Agency (EACEA). Neither the European Union nor EACEA can be held responsible for them. Project Number: 2023-1-DE02-KA220-VET-000157799



Co-funded by
the European Union

Each player can watch the game via the facilitator's shared screen and should also have this platform open so they can read the cards when needed.